



# NWA Bank Fishing Map

---

By: Kyle Rodgers

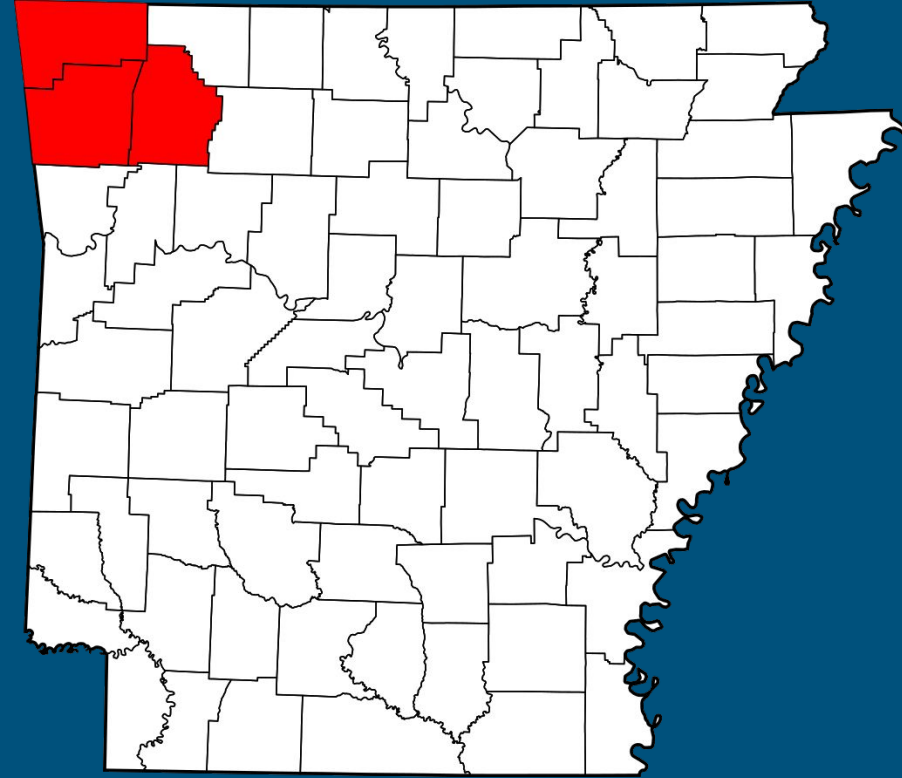


EMPACTS Project, Fall 2022  
Professor Paul Lowrey  
Northwest Arkansas Community College  
Bentonville, AR 72712

# NWA Fishing Map

---

This is a project to construct a map for the fishermen/fisherwomen of Northwest Arkansas. It shows a range of fishing spots with multiple species of fish. It gives information on the fishing spot such as species of fish located there, regulations required to fish there and the parking situation for the fishing spot.

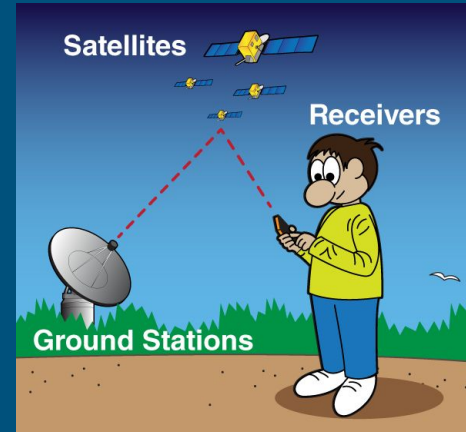
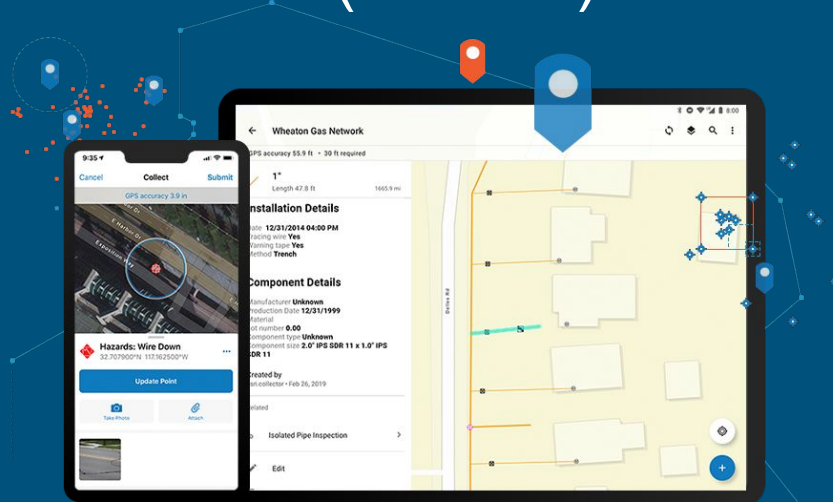


# Project Overview

## Collector for ArcGIS (Classic)

I traveled around Northwest Arkansas using the ArcGIS Collector App to shoot GPS points.

I then researched the location I took a shot at and put the data I collected with the GPS shot into my map.



# Community

The community served was anyone looking to fish in NorthWest Arkansas. My map allows people to find a fishing spot where they are able to access it and fish it with ease with a good expectation of what they are going to catch depending on where they go. It also informs you on what to expect when it comes to parking when arriving at the fishing spot.



# Curriculum

---

These are some of the learning outcomes utilized in the process of this project

- Import, store, and manage geographical data from a variety of sources.
- Organize layers, including such tasks as layer activation, hierarchy, and manipulation of layer display properties to optimize visual effect.
- Create and analyze new data by creating spatial relationships between multiple datasets.



# Methodology

---

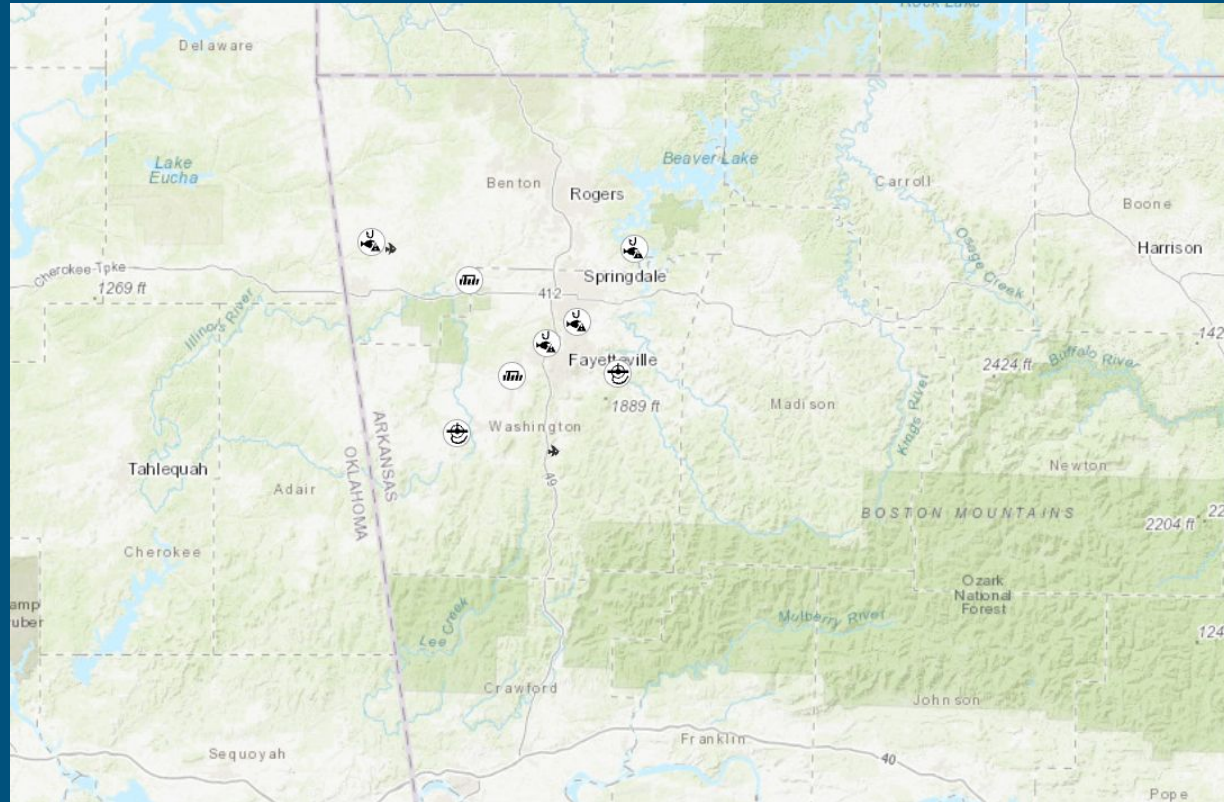
First I researched some different locations I may be able to use through the Arkansas Fish and Wildlife website and google maps. I then traveled around NorthWest Arkansas checking out the parking and public access to the waters at each spot and the ones that were fishable I took a GPS shot at. I then imported the data into a map and made the proper layers for my map using the data I collected in the field.



# Products of Learning Experience

GIS Map using ArcGIS online

<https://arcg.is/1zSuyD0>



# Citations

---

“Public Fishing Area.” *Arkansas Game and Fish Commission*,  
<https://www.agfc.com/en/>.

[Public Fishing Areas \(agfc.com\)](https://www.agfc.com/en/)

“Public Fishing Area.” *Arkansas Game and Fish Commission*,  
<https://www.agfc.com/en/>.

[Fayetteville-Springdale-Rogers, AR-MO - Google Maps](#)



# Acknowledgements

---

The Arkansas Game and Fish Commission

-Provided really useful information

Steven Flippo

-Helped proved location ideas

Daymein Jones

-Helped me to travel around Northwest Arkansas

Damen Bell

-Helped me to travel around Northwest Arkansas

[EMPACTS - NWA Fishing Map \(arcgis.com\)](#)

(link to map)

[https://upload.wikimedia.org/wikipedia/commons/thumb/5/57/Map\\_of\\_Arkansas\\_highlighting\\_Northwest\\_Arkansas.svg/1024px-Map\\_of\\_Arkansas\\_highlighting\\_Northwest\\_Arkansas.svg.png](https://upload.wikimedia.org/wikipedia/commons/thumb/5/57/Map_of_Arkansas_highlighting_Northwest_Arkansas.svg/1024px-Map_of_Arkansas_highlighting_Northwest_Arkansas.svg.png)