



Bentonville Murals

Neal Casement

GEOS 2943

Professor Lowrey

EMPACTS Project
Introduction to GIS
Spring 2021
Northwest Arkansas Community College
Bentonville, AR 72712

Project Objectives

To survey murals located on the Bentonville Square and produce an interactive tool for community use.



Project Outcomes and Products

For this project,

1. I created a survey that allows visitors to capture photos of murals and their conditions.
2. I collected photos and location data of murals in the field.
3. With the data collected I created a map with the points of the mural locations and their conditions
4. I uploaded the data to **arc maps online** and created a **story map** for the community

Community involvement

- This project was created to help get the community and visitors to the area involved with documenting the artwork on the square and the upkeep to maintain a beautiful environment.
- The survey can also function as a way for community leaders to plan events on the square.

Community contacts

During the data collecting process I learned that the murals had two different groups in charge of them.

- ❖ Shelli Kerr (Comprehensive planning manager for the city) is over the murals on the government and city buildings
- ❖ Stephanie Marpe (farmers market manager) who also helps organize events in the square is a contact for the murals on the other buildings.

GIS Curriculum

What am I supposed to learn from this project?

Learn how to...

- Import, store, and manage geographical data from a variety of sources
- Organize layers, including such tasks as layer activation, hierarchy, and manipulation of layer display properties to optimize visual effects
- Find and query spatial data by location and non-spatial data by attribute
- Display results in a variety of formats, including map, report, and graph.
- Digitize and edit new map features and their attributes

Timeline

- March 18th met with Professor Phillips
- April 12th created survey on survey123
- April 13th tested and edited survey
- April 17th collected data using the survey 123 app
- April 19th exported data and set up map on arcmaps and arc online
- April 27th meeting with Professor Phillips to present work

Final Products

- Survey Link
- Story Map



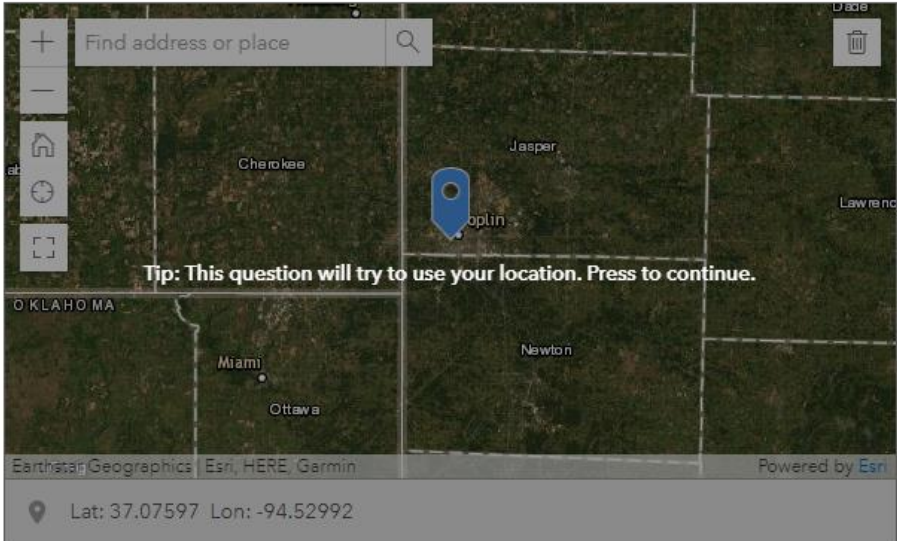
Survey for Public Use

Survey 123 link-
<https://arcg.is/1TPm98>

Bentonville Square Murals

A collection of murals around the Bentonville Arkansas Square

Mural location*
Tap where the mural is on the map.



Photo*
Upload a photo of the mural

1 Take a photo (number of photos allowed: 1 - 4)

Artist information
Add any information on the artist if you can (contact info. or social media handles)

Survey123 Overview

A collection of murals around the Bentonville Arkansas Square

Owner: jcasementjr_nwacceastlab, created: Apr 12, 2021, updated: Apr 26, 2021

The survey is shared with **Everyone** and **NWACC EAST Lab**



Total Records



Total Participants



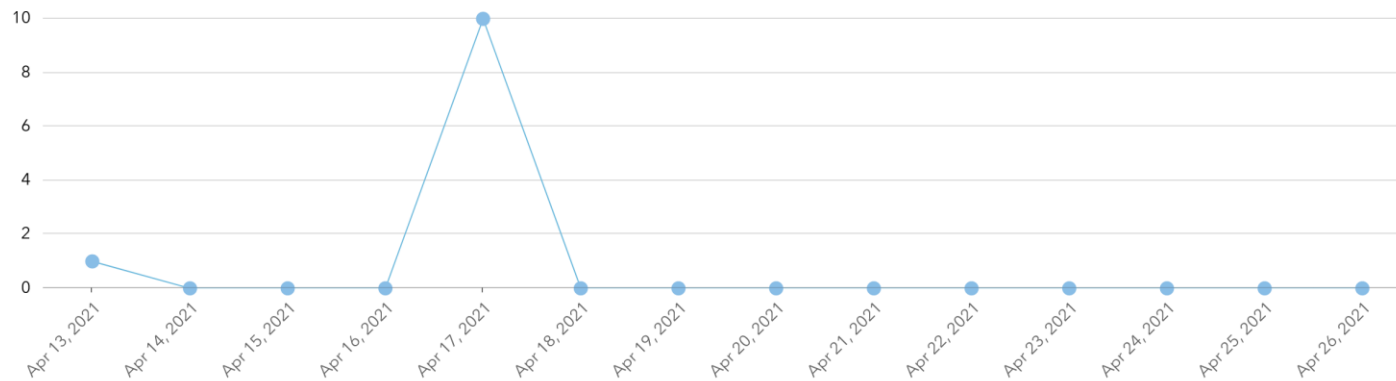
First Submitted On



Last Submitted On ⓘ

Surveys Count: 11 (Total: 11)

📅 4/13/21 - 4/26/21



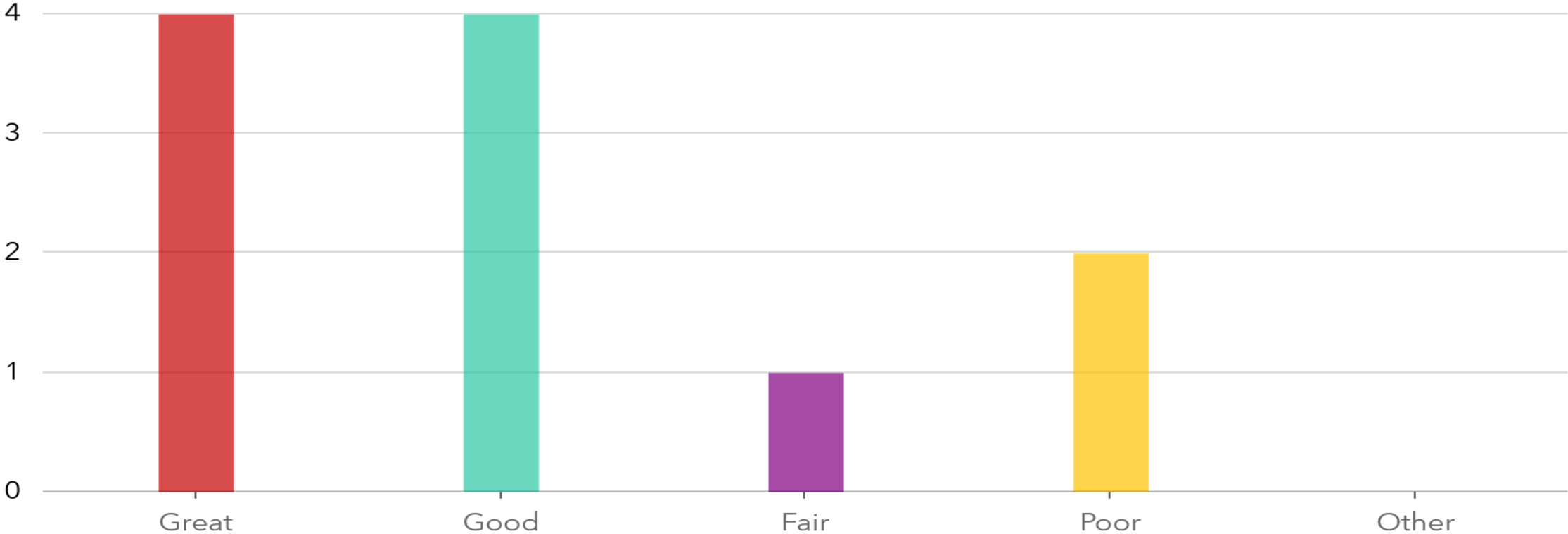
This graph shows when the data was collected and can be used to collect the data from the users when they collect data.

Mural condition

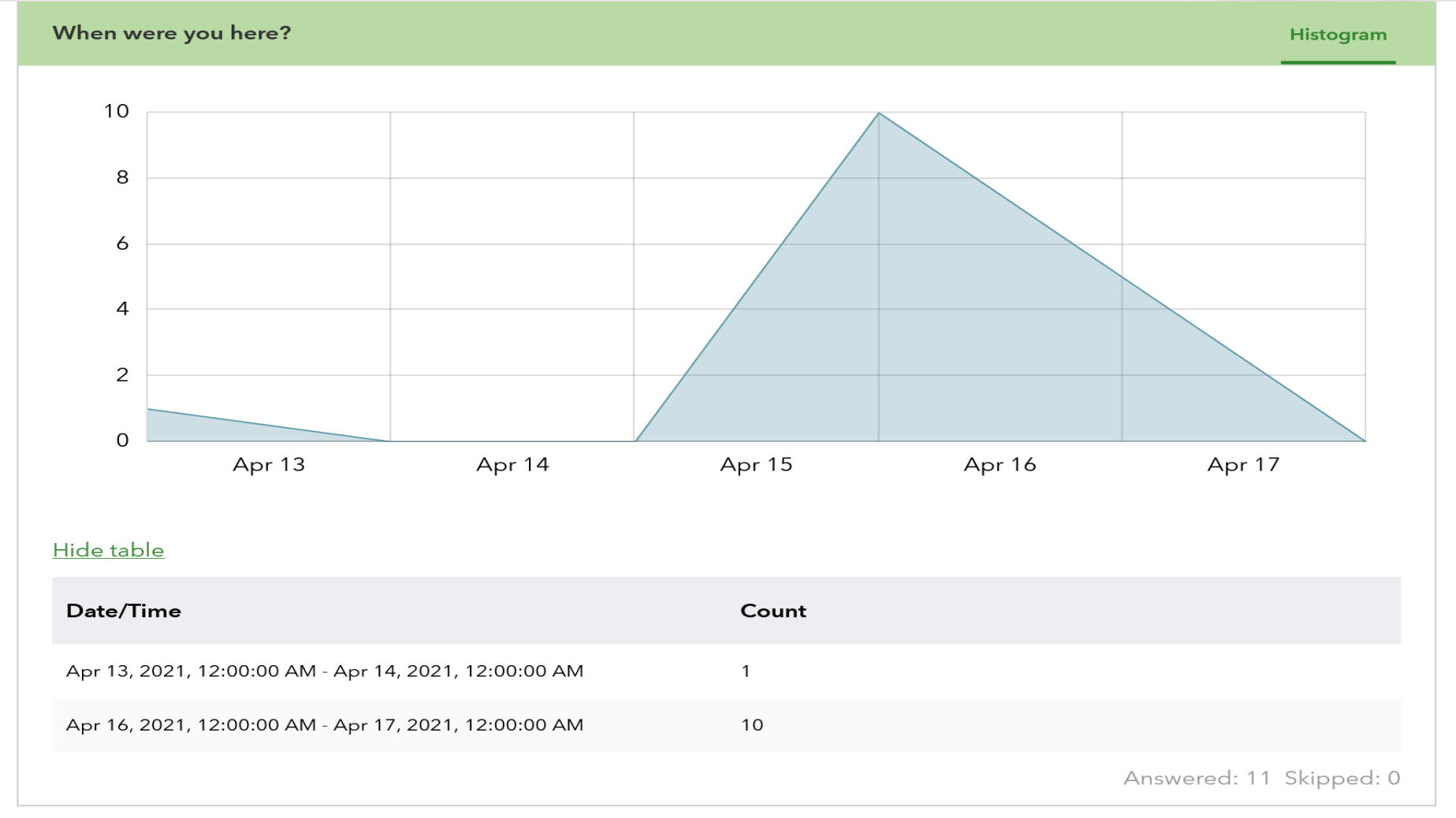


Mural condition *

Column Bar Pie Map



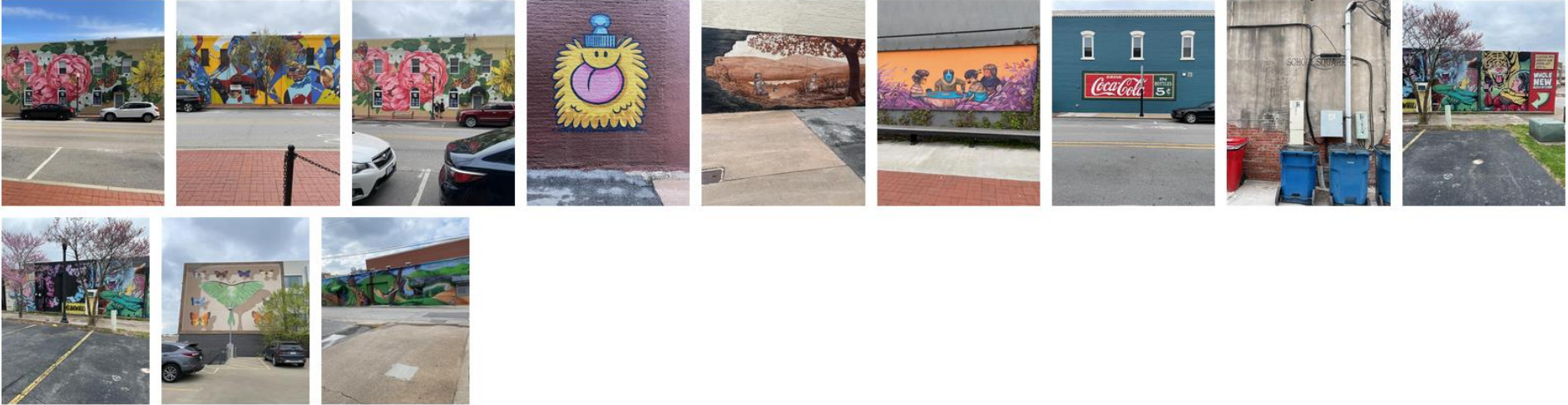
There is also a space for time and reason for visit and a place where people can enter the data for the artist if they know more.



Photos and information to put in the Story Map

Photo *

Gallery 



Images: 12

ArcGIS Map



Arc maps link

- Story map- <https://arcg.is/1GeLXX>
- Survey 123 link- <https://arcg.is/1TPm98>

